



TSXv: **KBG**
 FSE: **KGB1**

Lynx Lake Project

King's Bay is a Vancouver based company focused on the exploration of cobalt, and other high-tech metals in North America. The company believes in this emerging fast-growth sector, and will continue to seek out and evaluate properties that show promise for development. King's Bay Gold Corp is operating as King's Bay.

Location and Infrastructure

The Lynx Lake Property encompasses 240 square kilometres and is located in southern Labrador, approximately 100 km southeast of Happy Valley-Goose Bay. The Property can be accessed along the Trans-Labrador Highway, a 1.5 hour drive from Happy Valley-Goose Bay. A three phase powerline runs directly adjacent to the property allowing access to power upon mining advancement.

Previous Work

The majority of the historical work has been completed by local prospectors. The work included grab sampling and a localized hand held electromagnetic survey. Most of the work has been carried out in two large quarry pits excavated by the Department of Transportation during construction of the highway.

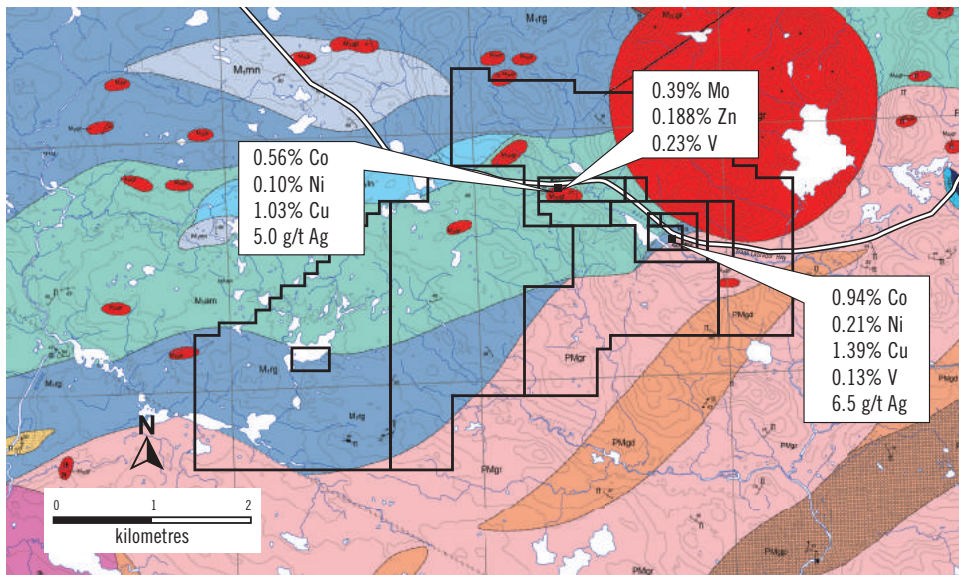
Mineralization

Prior to the construction of the Trans-Labrador Highway, there was little to no exposure on the property. Now due to excellent accessibility and new discoveries of mineralization in bedrock, the property has great exploration potential.

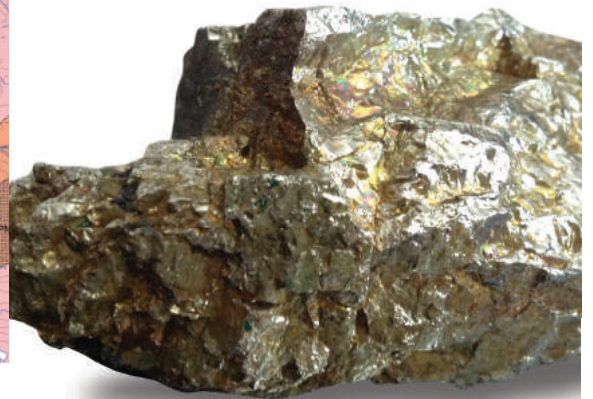


Highlights

- Excellent all season accessibility in a friendly mining jurisdiction
- 3 phase power line running directly adjacent to the property
- Preliminary grab samples yielding up to 1.39% Cu, 0.94% Co, 0.21% Ni, 6.5g/t Ag
- Cobalt and Base metal prices are increasing
- Underexplored area with tremendous potential for a big discovery



Claim Area Geology Map



Grab samples from gossanous areas of the eastern rock pit have yielded assays up to 1.39% Cu, 0.94% Co, 0.21% Ni, 6.5g/t Ag and 0.23% V. Veins of massive sulfide can be seen throughout these areas. Samples from the western pit yielded 1.03% Cu, 0.566% Co, 0.1% Ni and 5.0 g/t Ag. Molybdenite and Bismuth have also been discovered in the western area of mineralization yielding 0.392% Mo and 112ppm Bi.

A historic hand held EM survey carried out by previous owners has indicated strong conductors present in the subsurface in several areas of the property.

This property has great potential as an exploration target for an economic Cu-Co-Ni magmatic or Iron Oxide Copper Gold type deposit

Geology

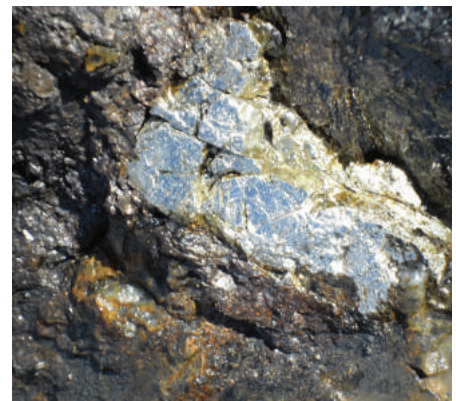
The property lies within the Proterozoic terrane of the Grenville Province. The western part of the property is underlain by granitic orthogneiss that varies in composition from granite to granodiorite and varies texturally from merely foliated to well-banded gneiss. The eastern part of the property, separated by a northeasterly trending fault, is underlain by granitoids and amphibolitic units with massive gabbro, norite and troctolite throughout.

Proposed Phase 1 Exploration Plan

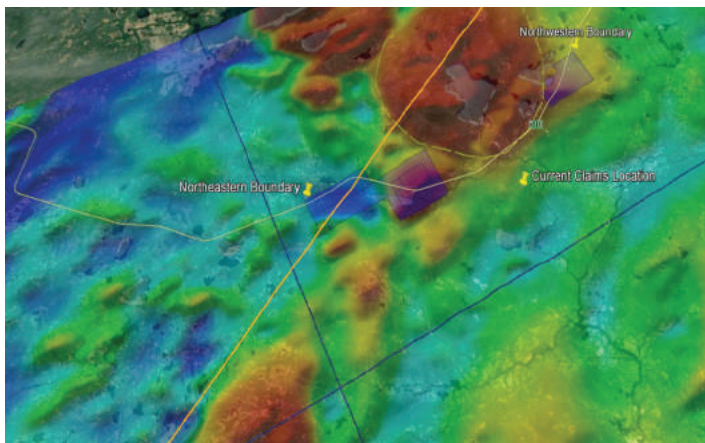
King's Bay has initiated a preliminary sampling program to resample the pre-existing pits, along with a small-scale EM-16 program. This will be followed by a winter airborne geophysical survey to identify high priority drill targets.



Gossan & Massive Sulphide



Lynx Lake Gossan



Regional Aeromagnetic Survey



Trans-Labrador Highway and Powerline runs adjacent to Property

Management:

Kevin Bottomley
President & CEO

Bradley Hoepfner
Director

Nick Rodway
Director

Dusan Berka
Director

Corporate Office:

Suite 1450
789 West Pender St,
Vancouver, BC, V6C 1H2
Tel: 604.681.1568
Fax: 604.681.8240
brad@KingsBayRes.com



www.KingsBayRes.com